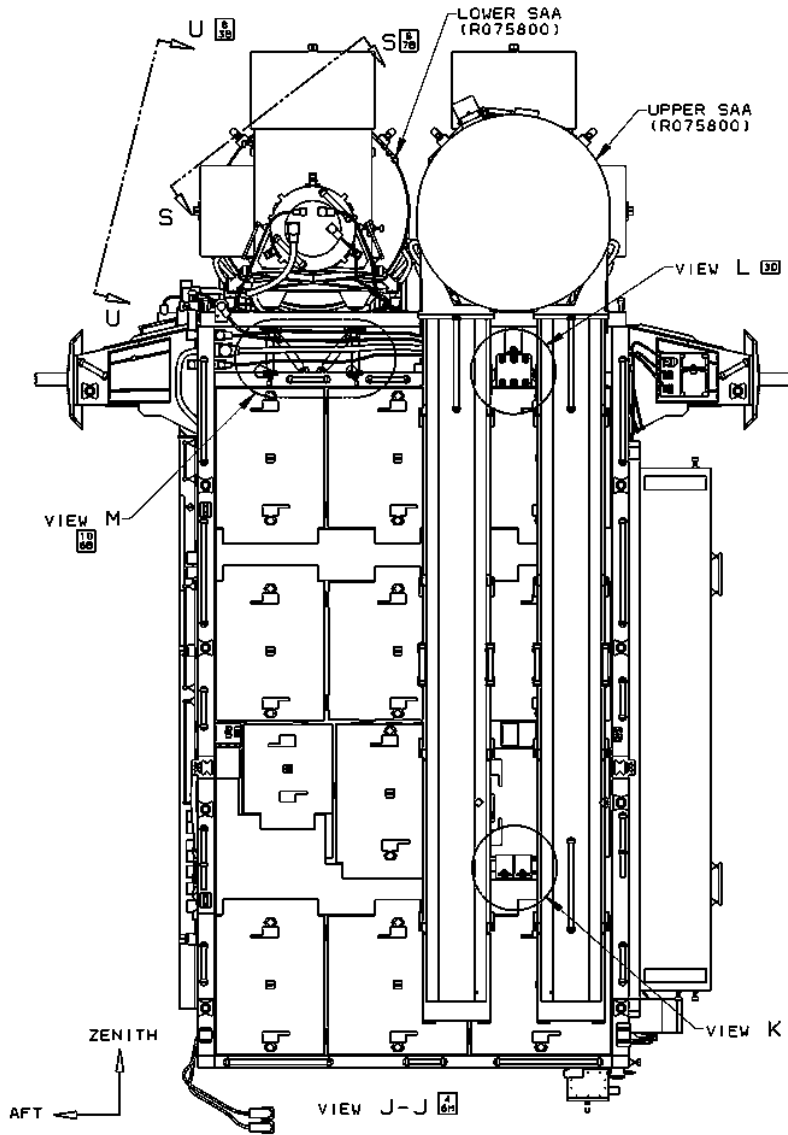
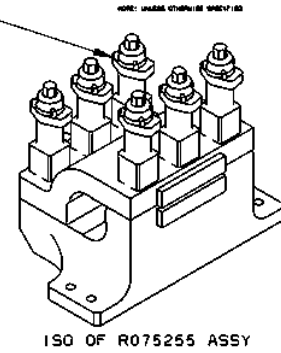
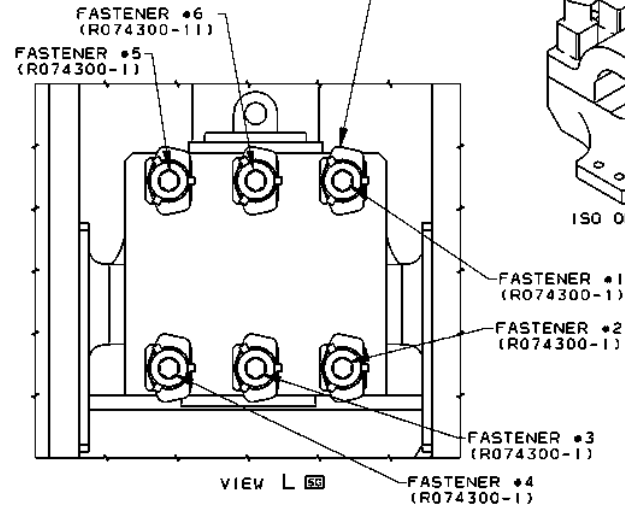


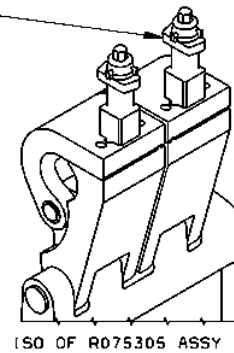
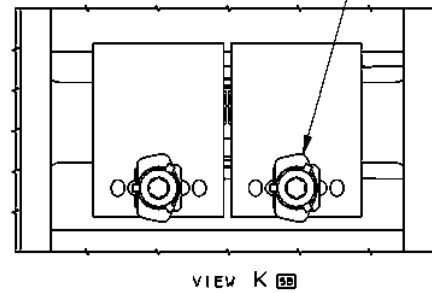
SAA DEPLOYMENT PREP – RELEASE SAAB FWD AND AFT LAUNCH RESTRAINTS



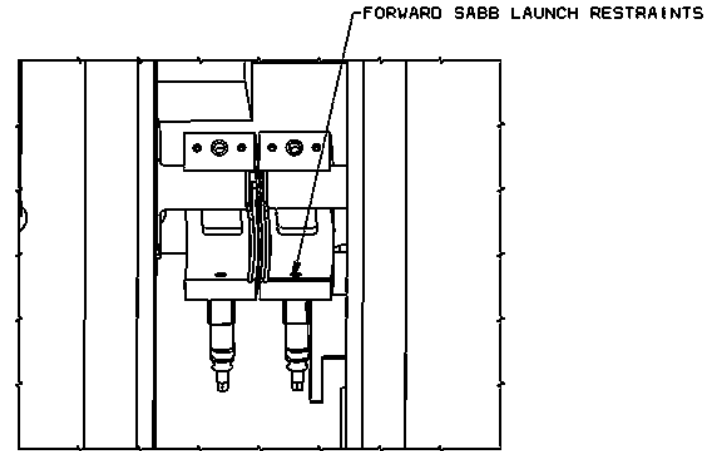
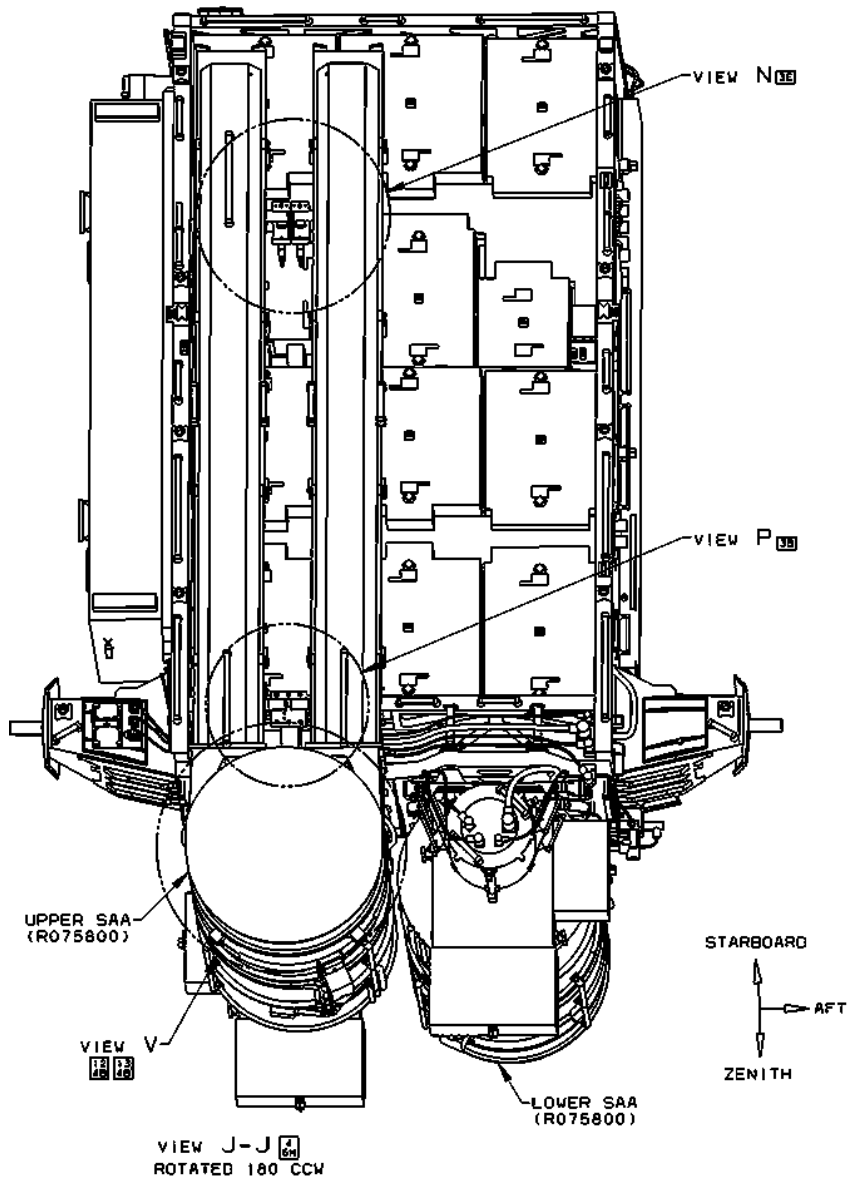
RELEASE UPPER AFT SABB LAUNCH RESTRAINT (R075255). 6X AFT RESTRAINT FASTENER (R074300) BREAK GROUND SET TORQUE Ⓢ F3
 RELEASE FASTENER #1 FIRST, FASTENER #2-5 IN ANY ORDER, FASTENER #6 LAST
 STORE BRACKET IN LONG SPACER STOWAGE BIN SEE SHT 15



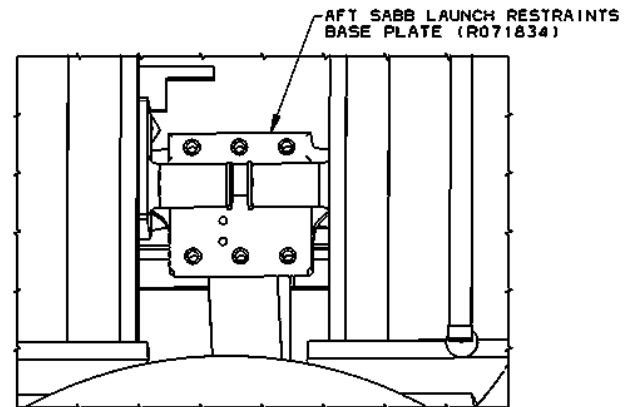
RELEASE UPPER/FORWARD SABB LAUNCH RESTRAINTS (R075305)
 2X FORWARD RESTRAINT FASTENERS (R074300)
 BREAK GROUND SET TORQUE Ⓢ F4



SAA DEPLOYMENT PREP – DEPLOYMENT OF LAUNCH RESTRAINTS



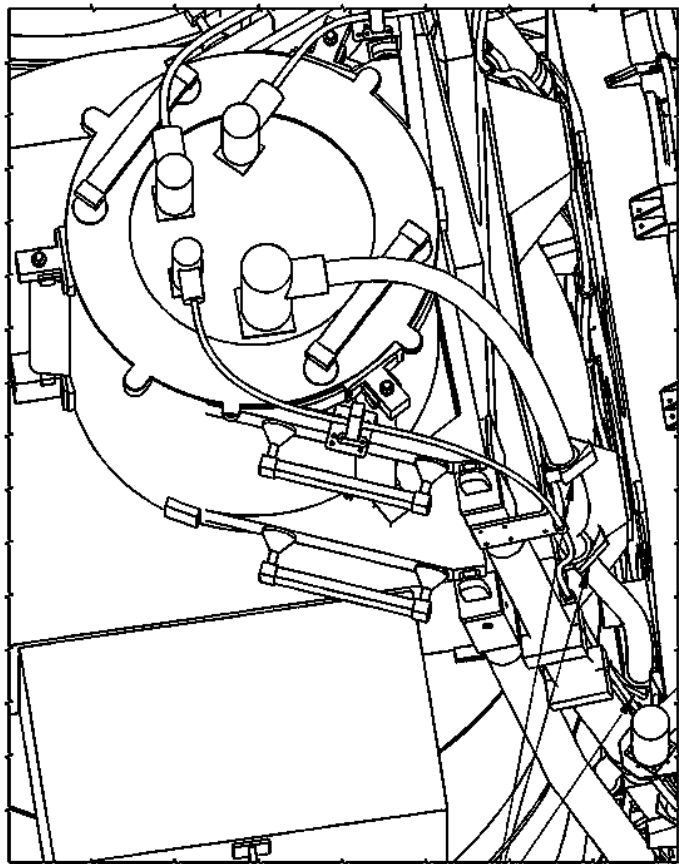
OPEN R075305 CAP UNTIL UNIT STOP IS REACHED
VIEW N



REMOVE AND STOW TOP HALF OF R075255
BRACKET INTO LONGSPACER STORAGE BIN
SEE SHY 15

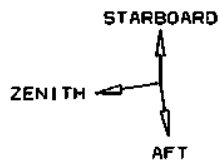
VIEW P

LOWER SAA DEPLOYMENT PREP – BGA PRI PWR CABLE CLAMPS

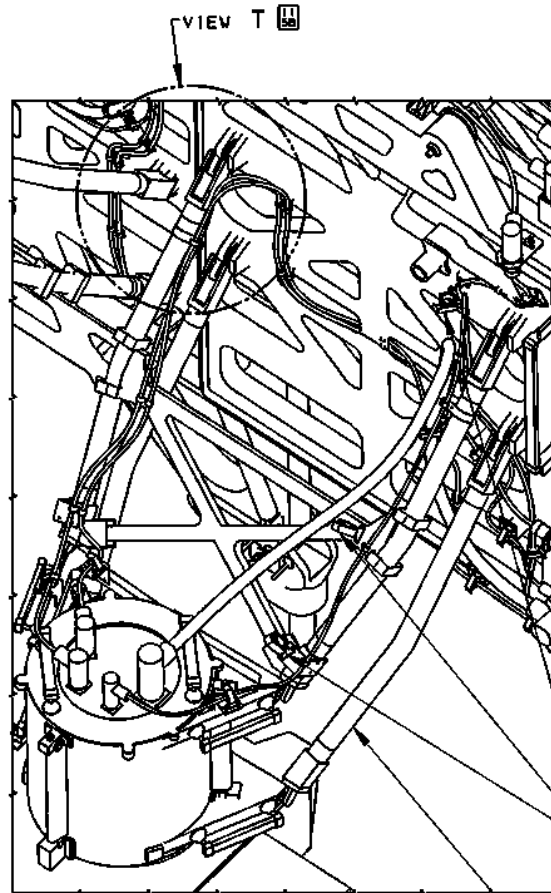


RELEASE BGA POWER CABLE FROM CLAMPS PRIOR TO FOUR BAR DEPLOYMENT

VIEW S-S
LAUNCH CONFIGURATION
2 PLACES



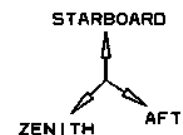
FOUR BAR
LOWER SAA
(R075800)



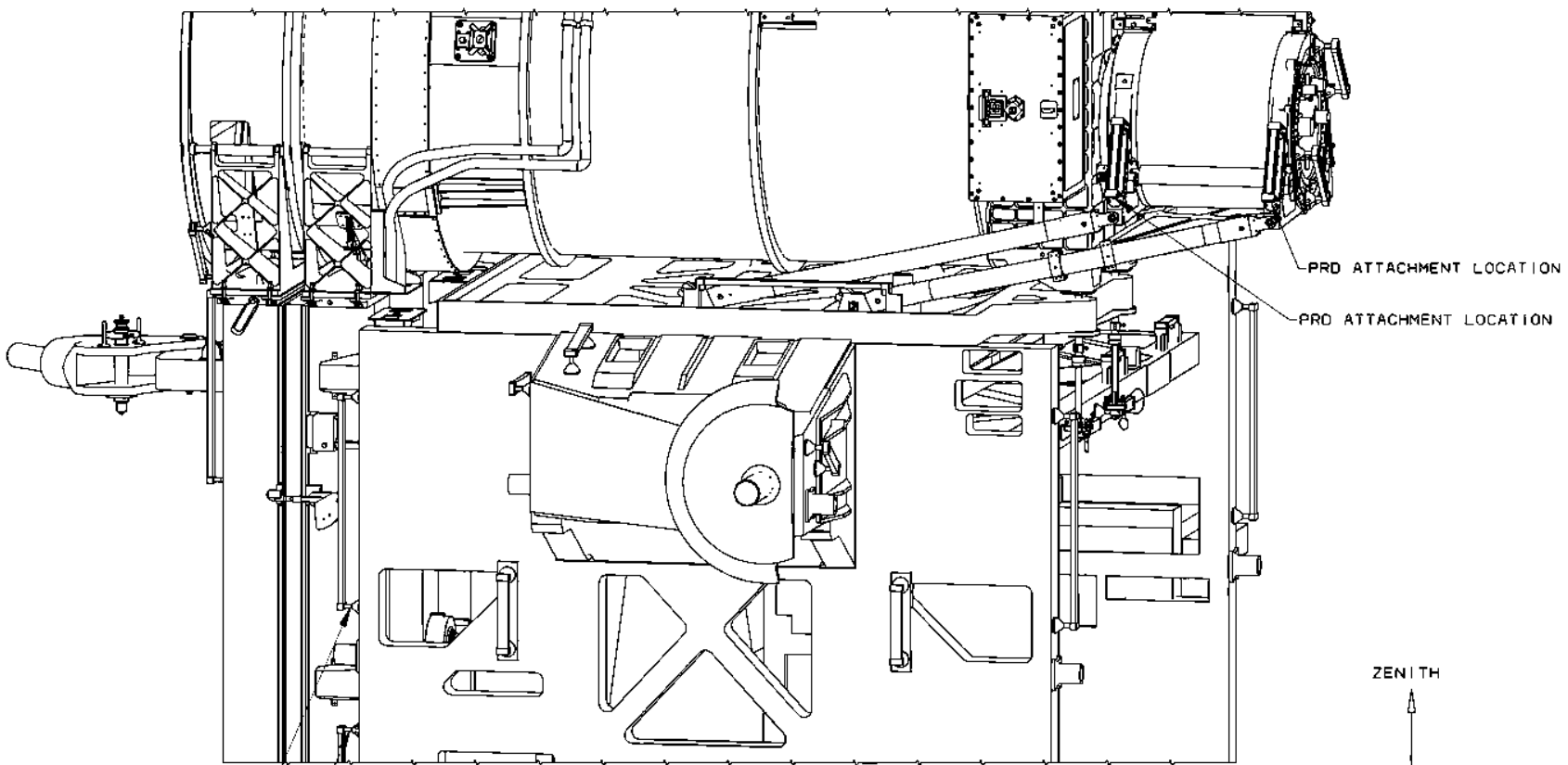
VIEW U-U
DEPLOYED CONFIGURATION
2 PLACES

BGA POWER
CABLE CLAMPS
(R078501)

FOUR BAR
LOWER SAA
(R075800)

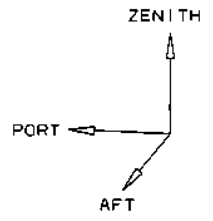


SAA DEPLOYMENT PREP – PRD ATTACHMENTS



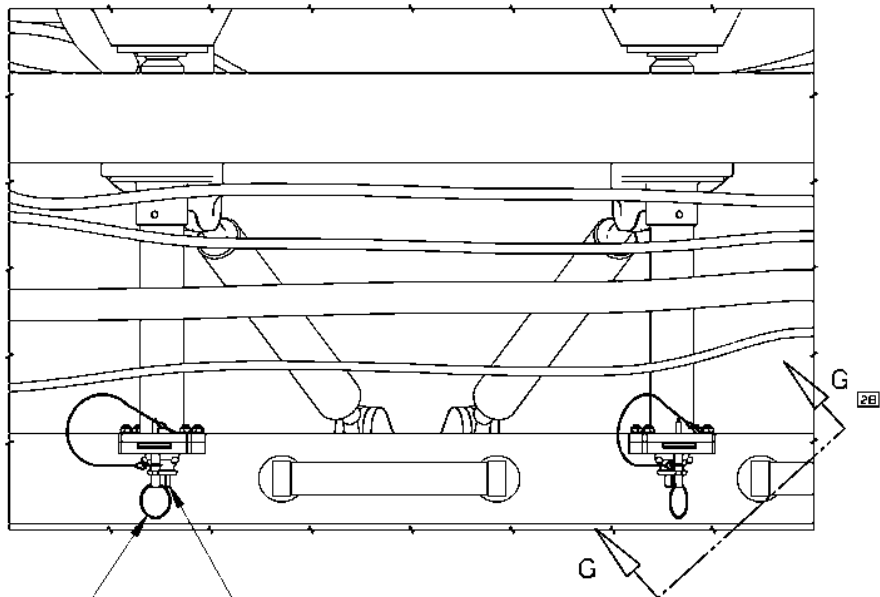
PRD ATTACHMENT LOCATION
PRD ATTACHMENT LOCATION

PRD ATTACHMENT LOCATION
PRD ATTACHMENT LOCATION



VIEW AR-AR $\frac{1}{46}$

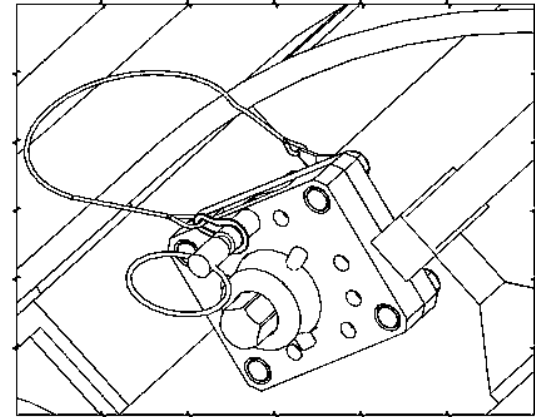
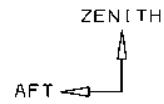
SAA DEPLOYMENT PREP – RELEASE LOWER BETA GIMBAL LAUNCH RESTRAINTS



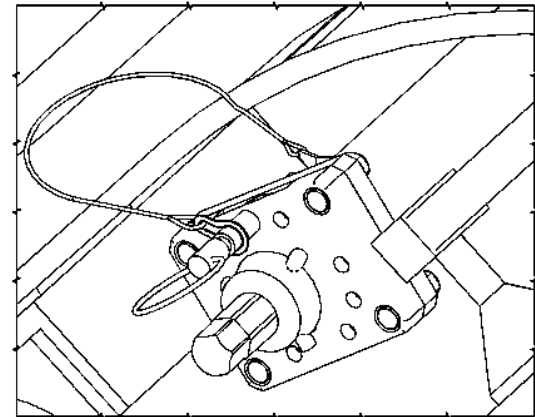
CLAMPING SHAFT (R075232-3), TO RELEASE TURN COUNTERCLOCKWISE. BREAK GROUND SET TORQUE 5 F5 (2X)

REMOVE PIP PIN (R03095-112) PRIOR TO BREAKING TORQUE REPLACE PIP PIN (2X) AFTER COMPLETING OPERATION

VIEW M 6
6E
2 PLACES



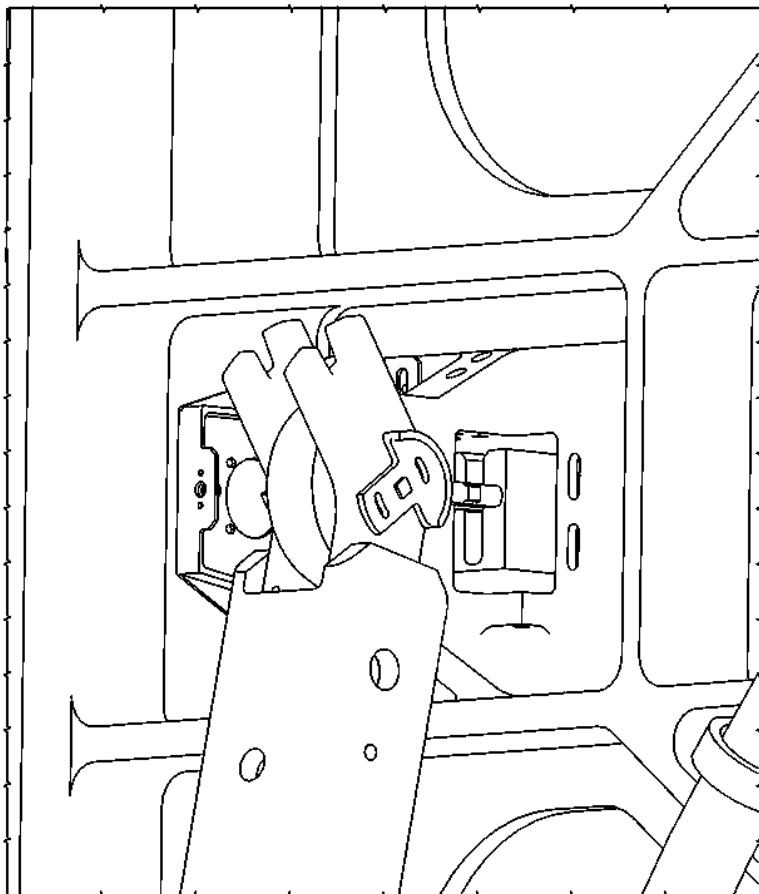
LAUNCH



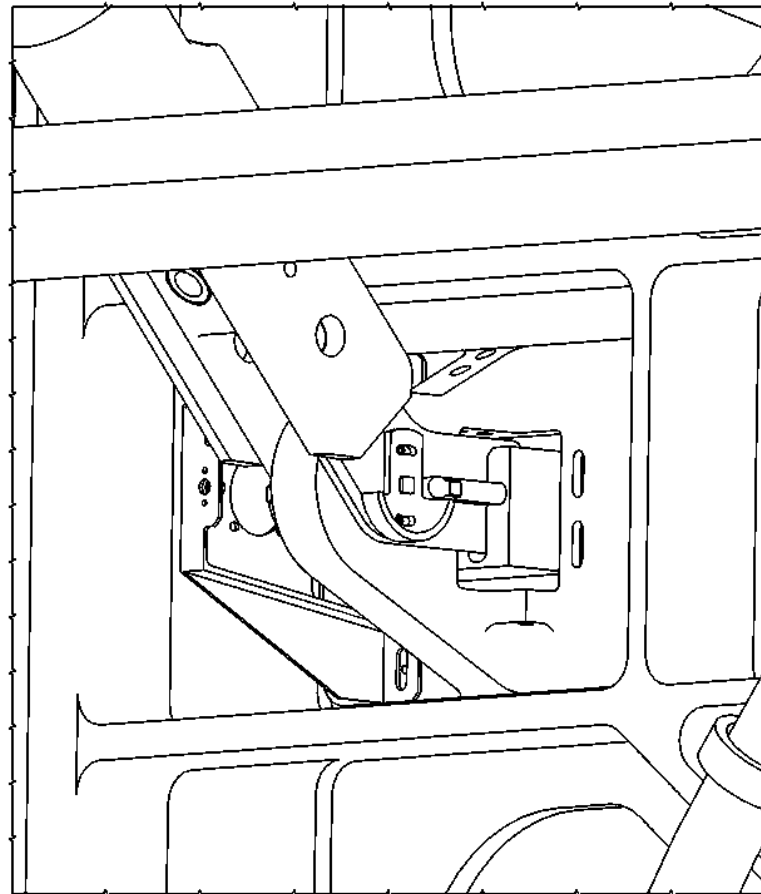
DEPLOYED

SECTION G-G 4D


SAA DEPLOYMENT PREP – FOUR BAR IN LOCKED POSITION (8)

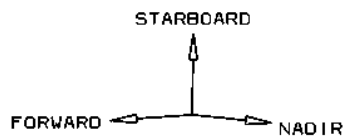


LAUNCH

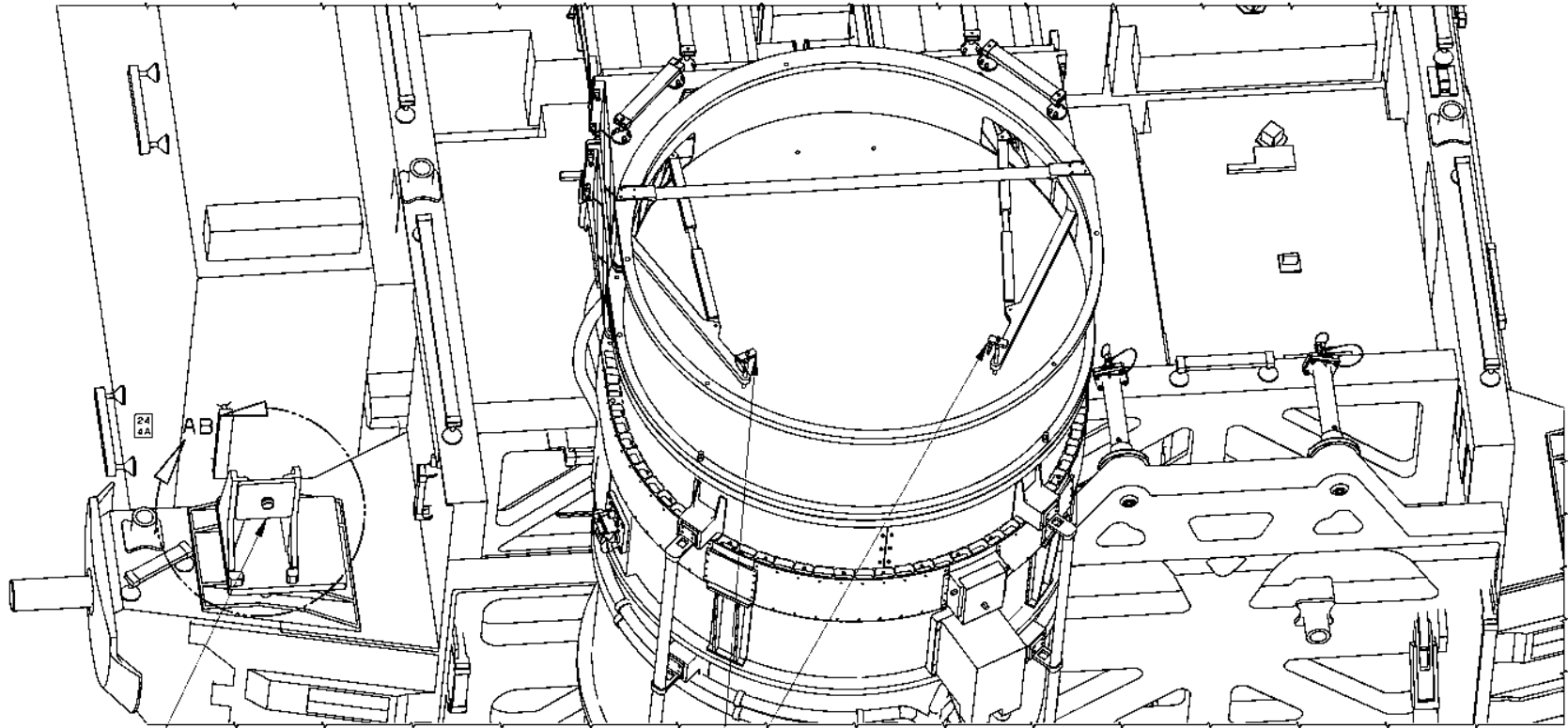


DEPLOYED

VIEW T 



SAA DEPLOYMENT PREP – DISENGAGE BLANKET BOX PIVOT FITTING PIP PINS



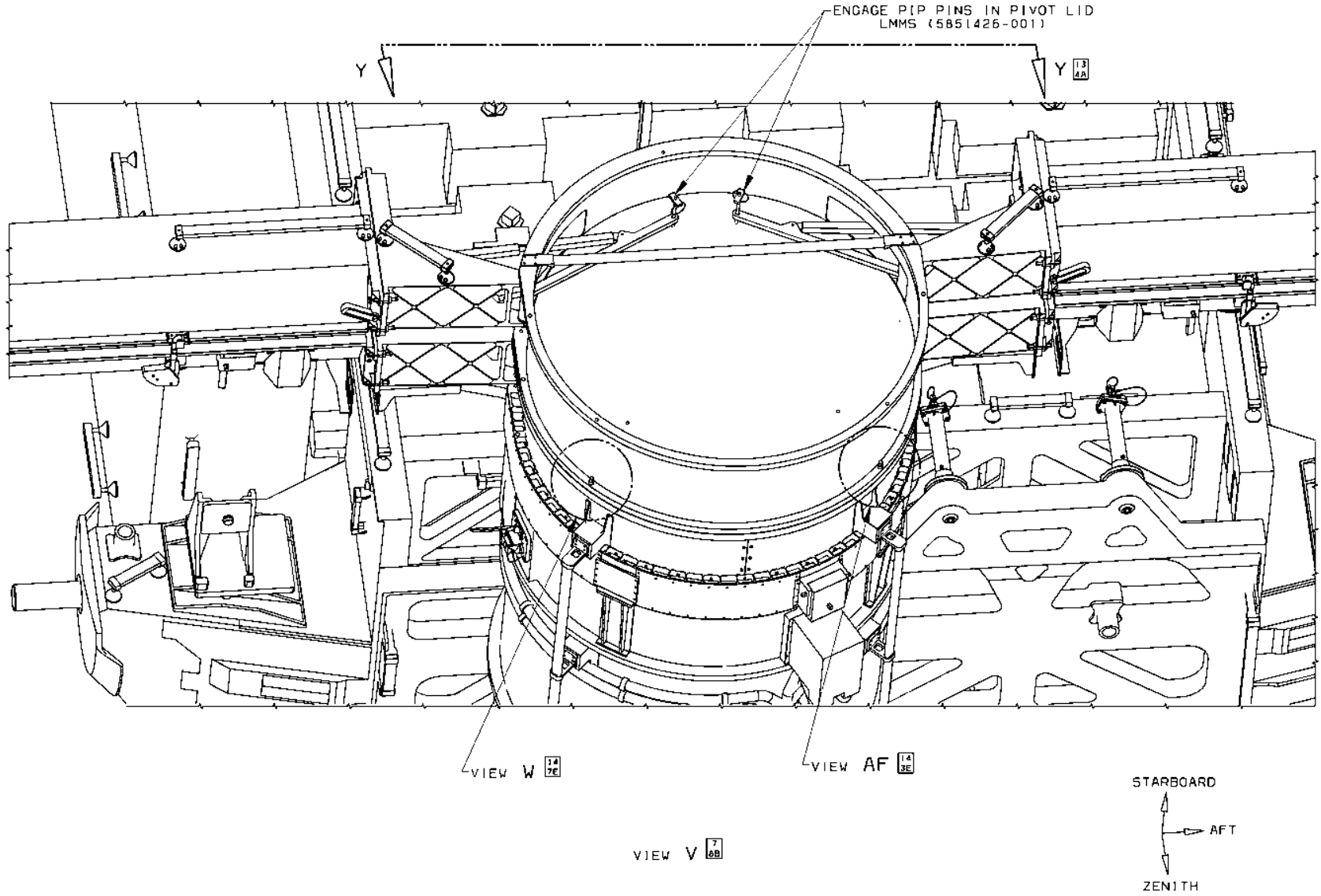
SASA MOUNT ASSY
(R077380)

DISENGAGE PIP PINS FROM PIVOT LID
LMMS (5851426-001)

VIEW V 7
66

STARBOARD
↑
AFT →
ZENITH ↓

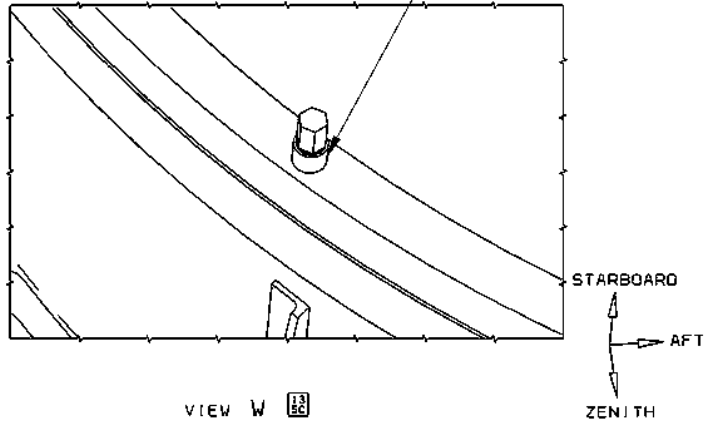
SAA DEPLOYMENT PREP – RE-ENGAGE BLANKET BOX PIVOT FITTING PIP PINS



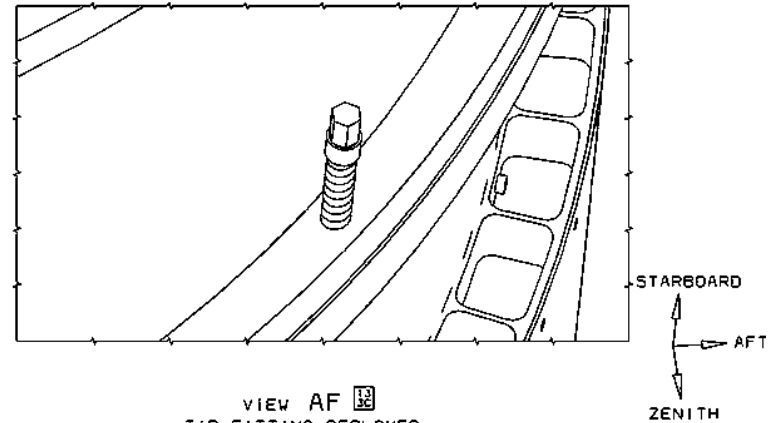
SAA DEPLOYMENT PREP – SOLAR ARRAY LOCKING ARMS

TIP FITTING LMMS (5843517-003), TURN COUNTERCLOCKWISE TO BREAK GROUND SET TORQUE (5 F6), FASTENERS WILL POP UP WHEN DISENGAGED.

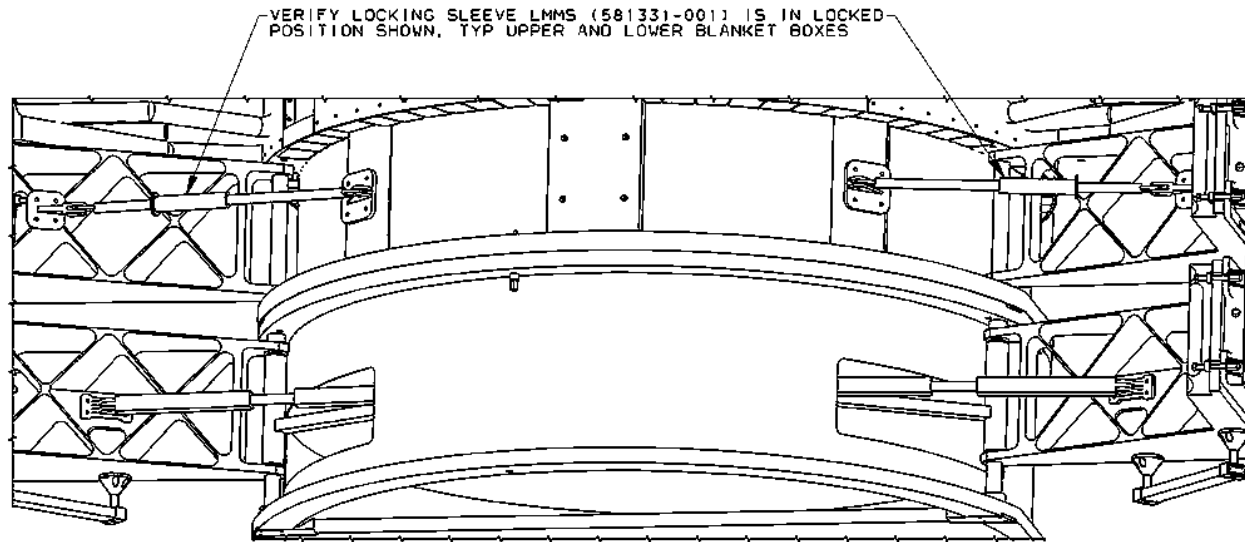
NOTE: (ALL DIMENSIONS SPECIFIED)



VIEW W ¹³/₂₀
TIP FITTING INSTALLED
3 PLACES EACH MAST CANISTER



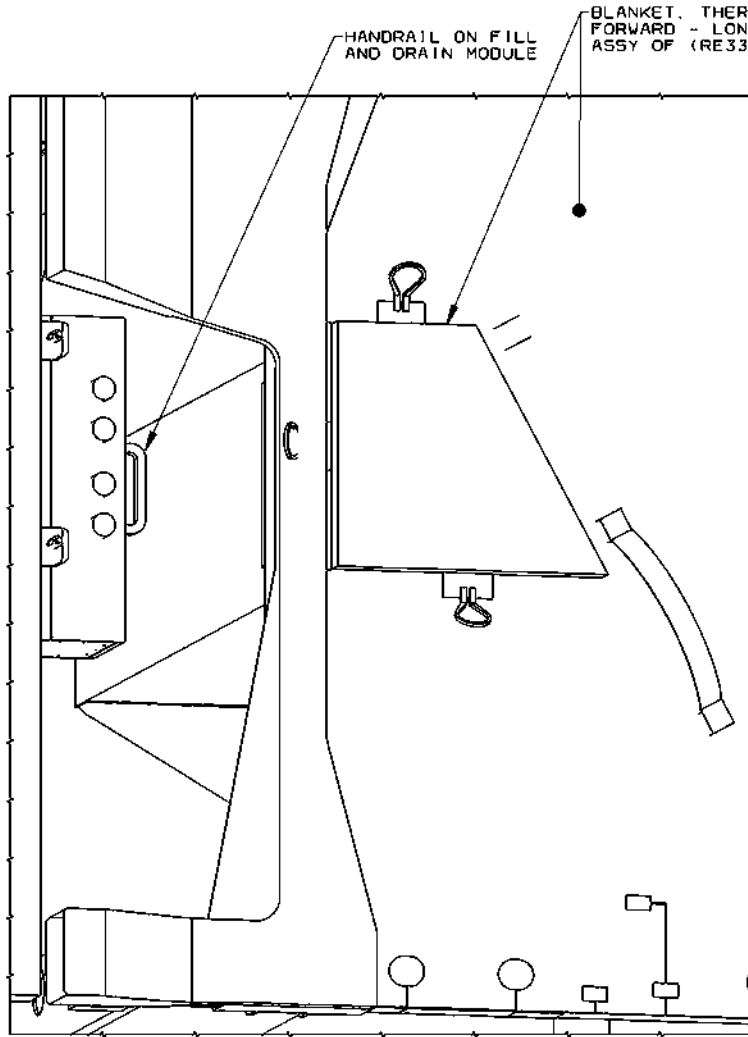
VIEW AF ¹³/₂₀
TIP FITTING DEPLOYED
3 PLACES EACH MAST CANISTER



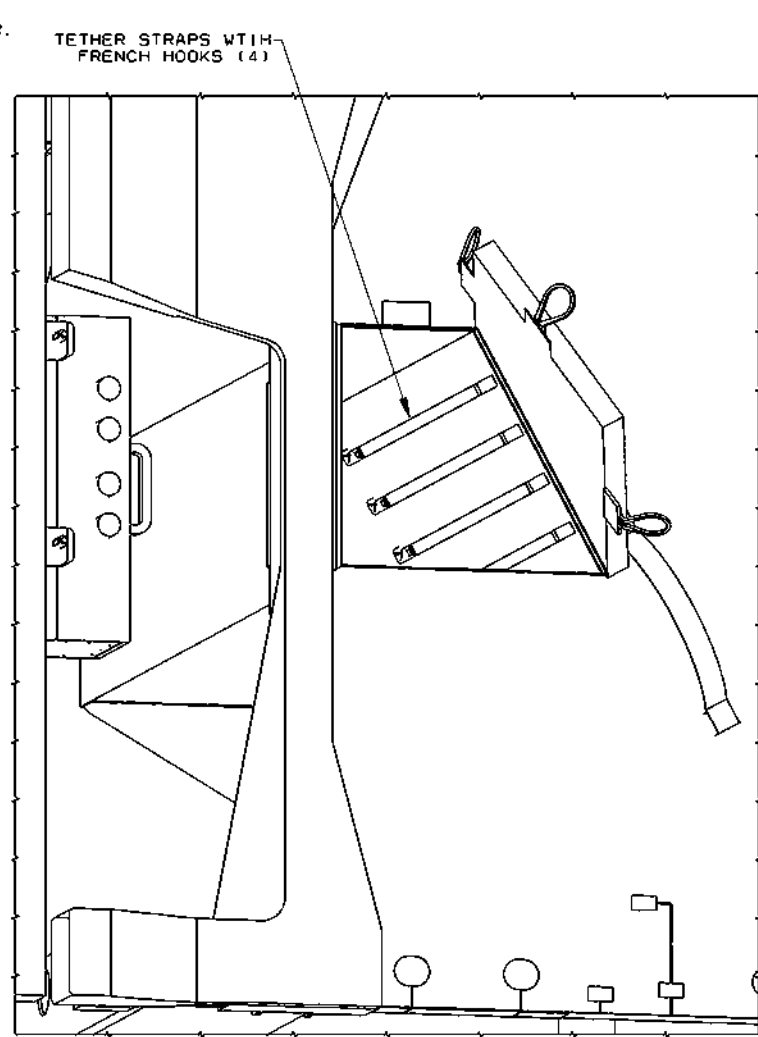
VIEW Y-Y ¹³/₂₀
SOLAR ARRAY LOCKING ARMS

VERIFY LOCKING SLEEVE LMMS (581331-001) IS IN LOCKED POSITION SHOWN, TYP UPPER AND LOWER BLANKET BOXES

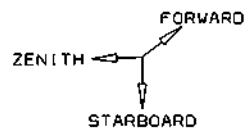
LOCATION OF P6 (LONG SPACER) STORAGE BIN (RE3312)



STOWAGE BIN CLOSED

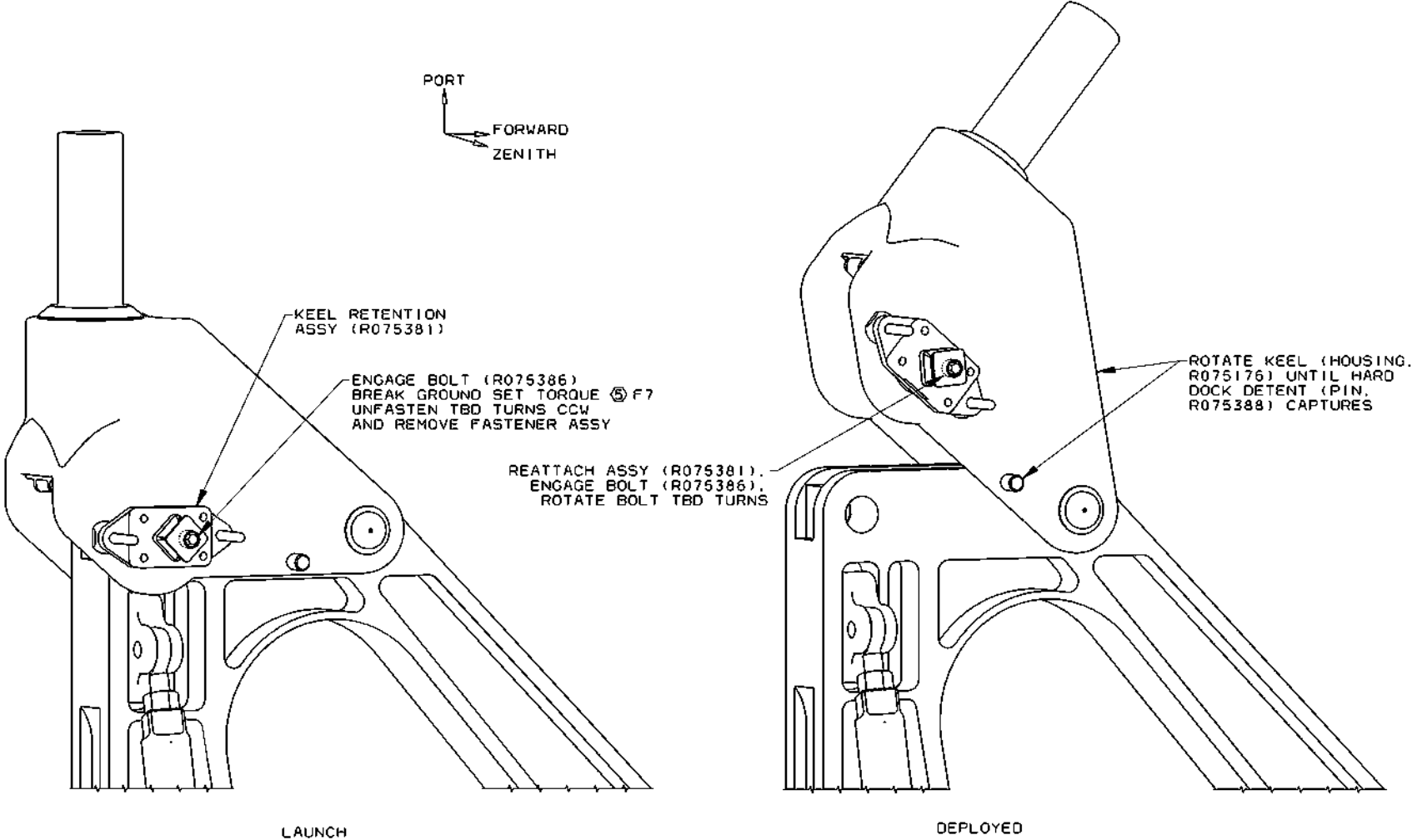


STOWAGE BIN OPEN

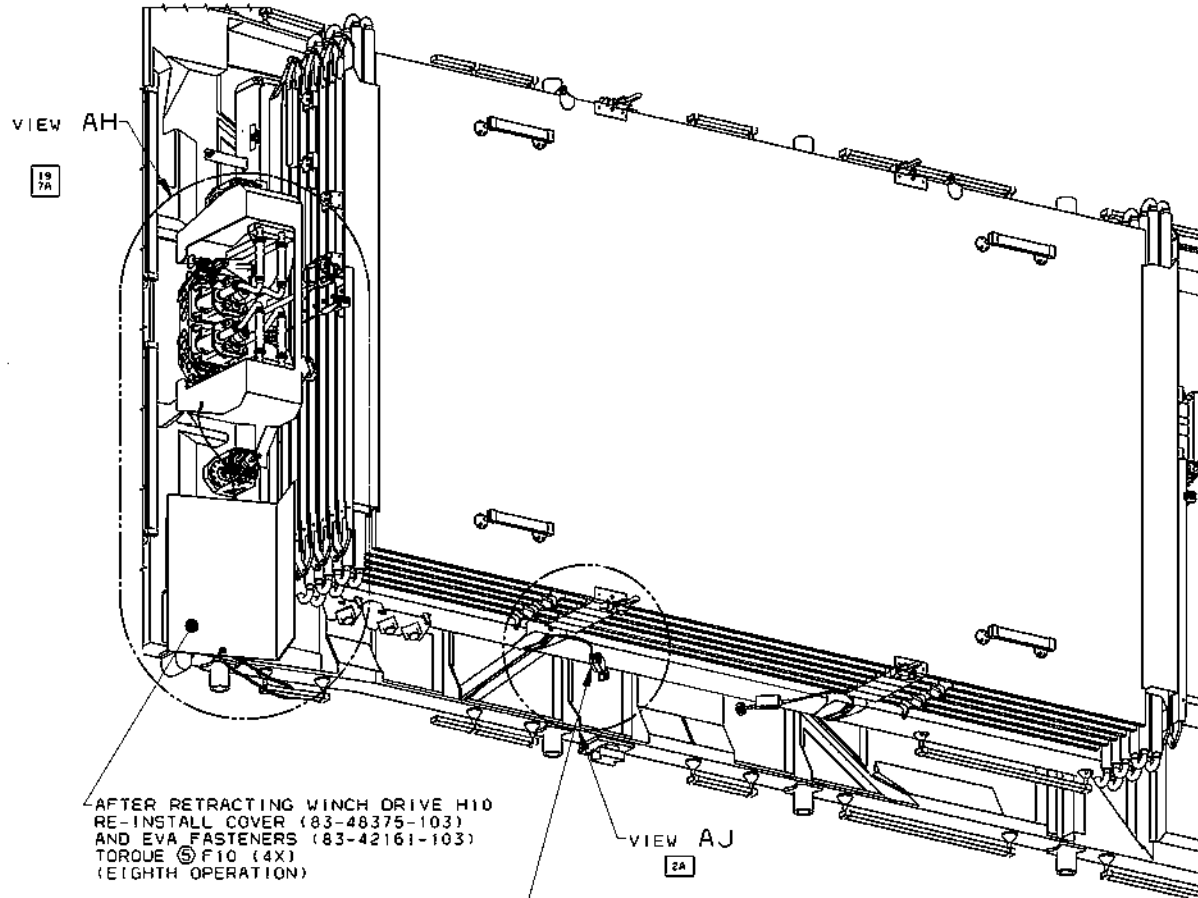


VIEW D-D

REPOSITION P6 KEEL PIN



PV RADIATOR DEPLOYMENT – PVR CINCHES STOWED

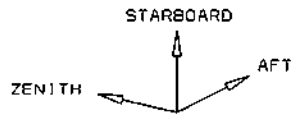


AFTER RETRACTING WINCH DRIVE H10
 RE-INSTALL COVER (83-48375-103)
 AND EVA FASTENERS (83-42161-103)
 TORQUE Ⓢ F10 (4X)
 (EIGHTH OPERATION)

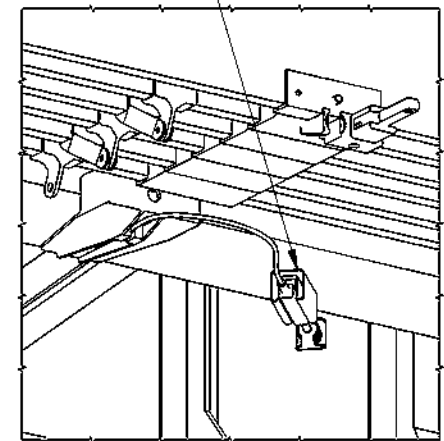
STOW CINCHES IN CINCH CLIPS (6X)

VIEW AJ 2A

VIEW A-A 3
6G



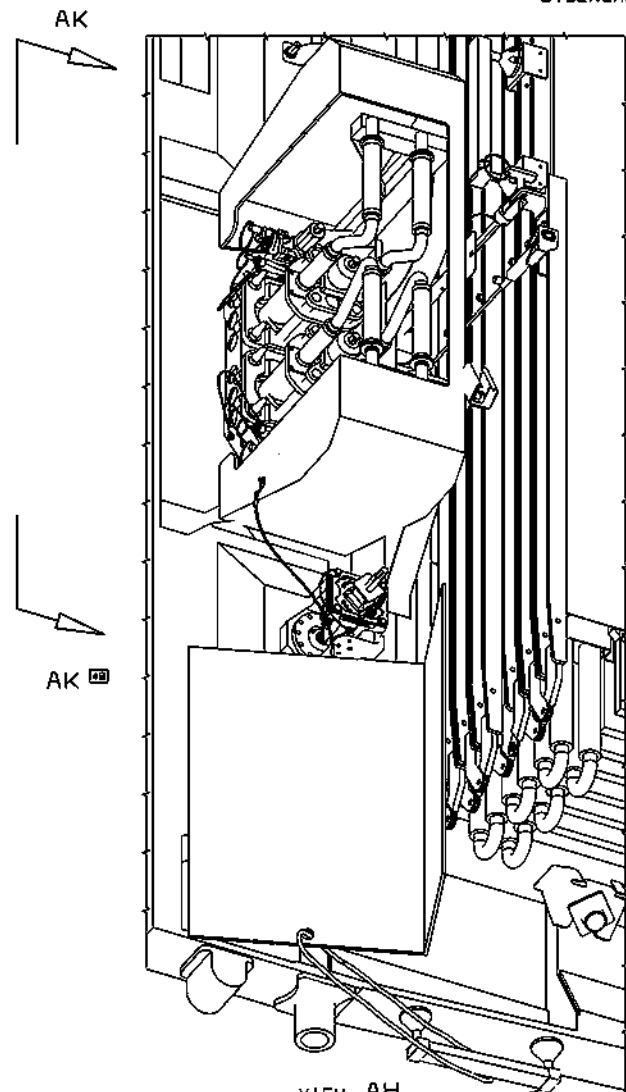
CINCH CLIP (6X)
 (83-42096-103)



STOWED POSITION (6X)

VIEW AJ 6C

PV RADIATOR DEPLOYMENT – ACTIVATE H2O WINCH DRIVE



RESTRAIN COVER AWAY FROM CINCH WORKSITE ATTACH TO HANDHOLD (RECOMMENDED)

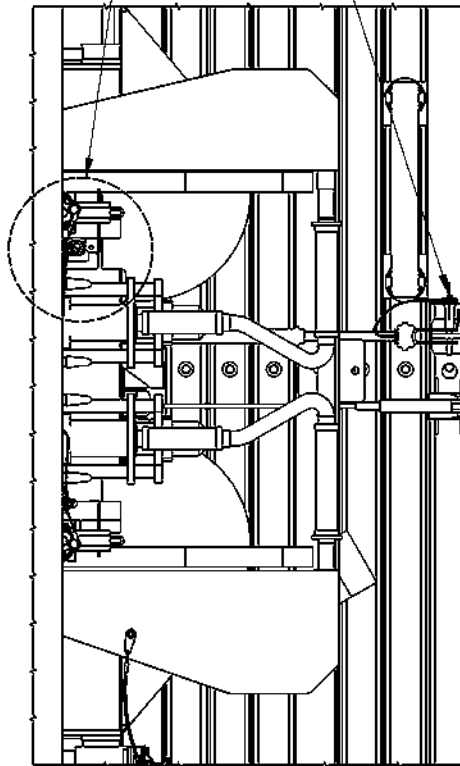
VIEW AH 18 85

HANDRAIL
SEG33106347-807

REPLACE COVER (NINTH OPERATION)

DISENGAGE PIP PIN (2X) (RE4363-09) (FIFTH OPERATION)
STOW PIP PIN BACK INTO WINCH ROD (2X) (SIXTH OPERATION)

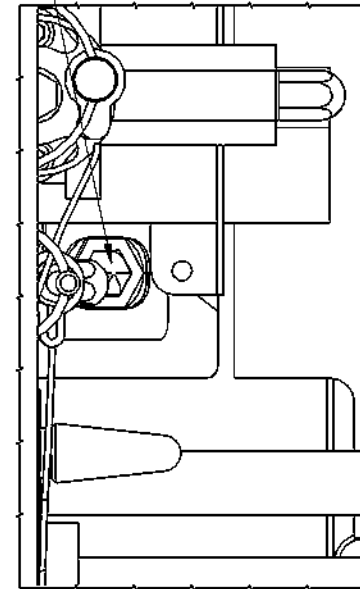
VIEW AL 80



VIEW AK-AK 80

H33 WINCH ROD ASSY (83-42141-101)

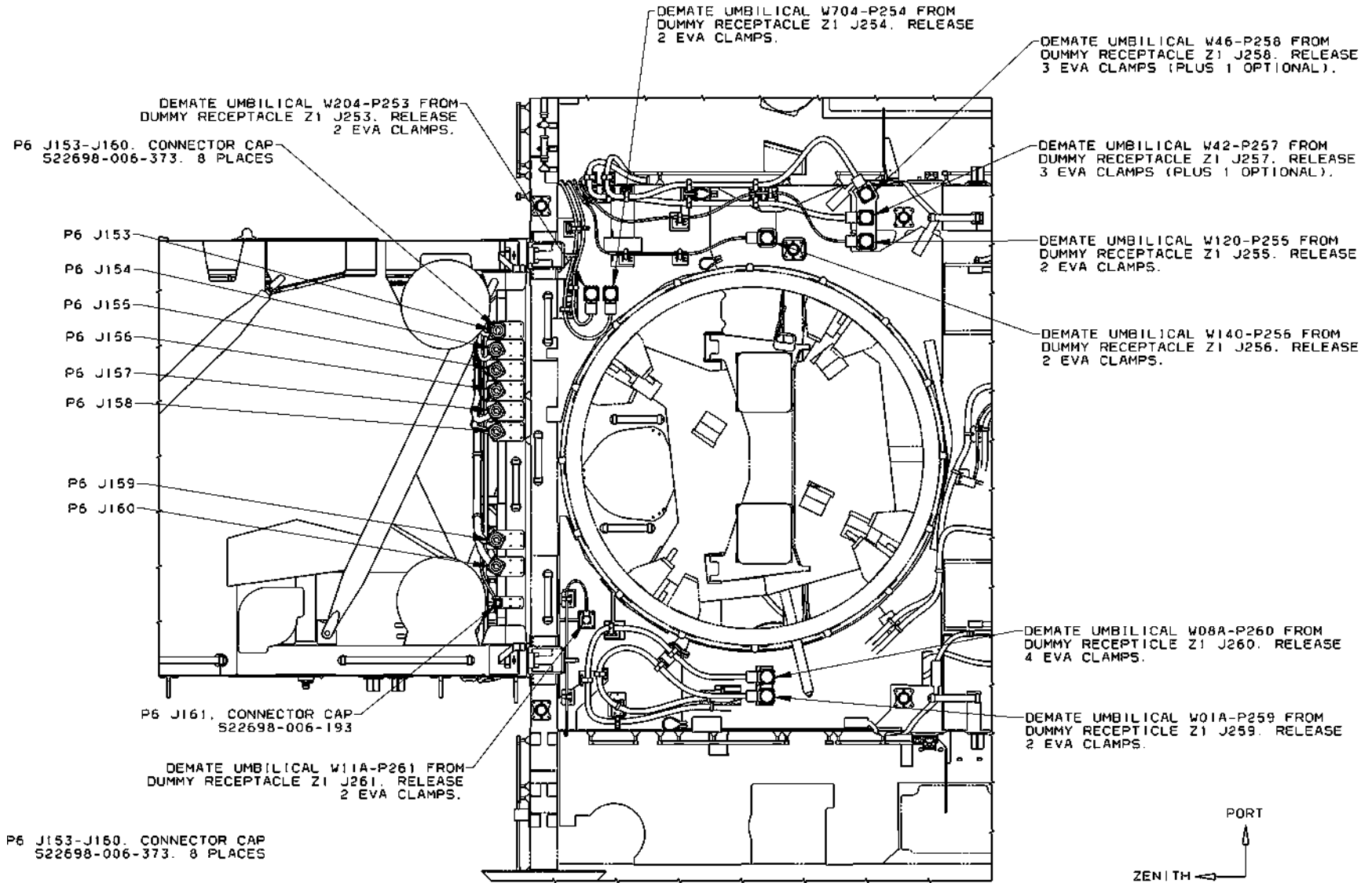
ACTUATE H10 WINCH DRIVE (83-42210-101) (FOURTH OPERATION)
AFTER RE-ATTACHING PIP PINS USE WINCH DRIVE TO RETRACT WINCH RODS (SEVENTH OPERATION)



VIEW AL 80

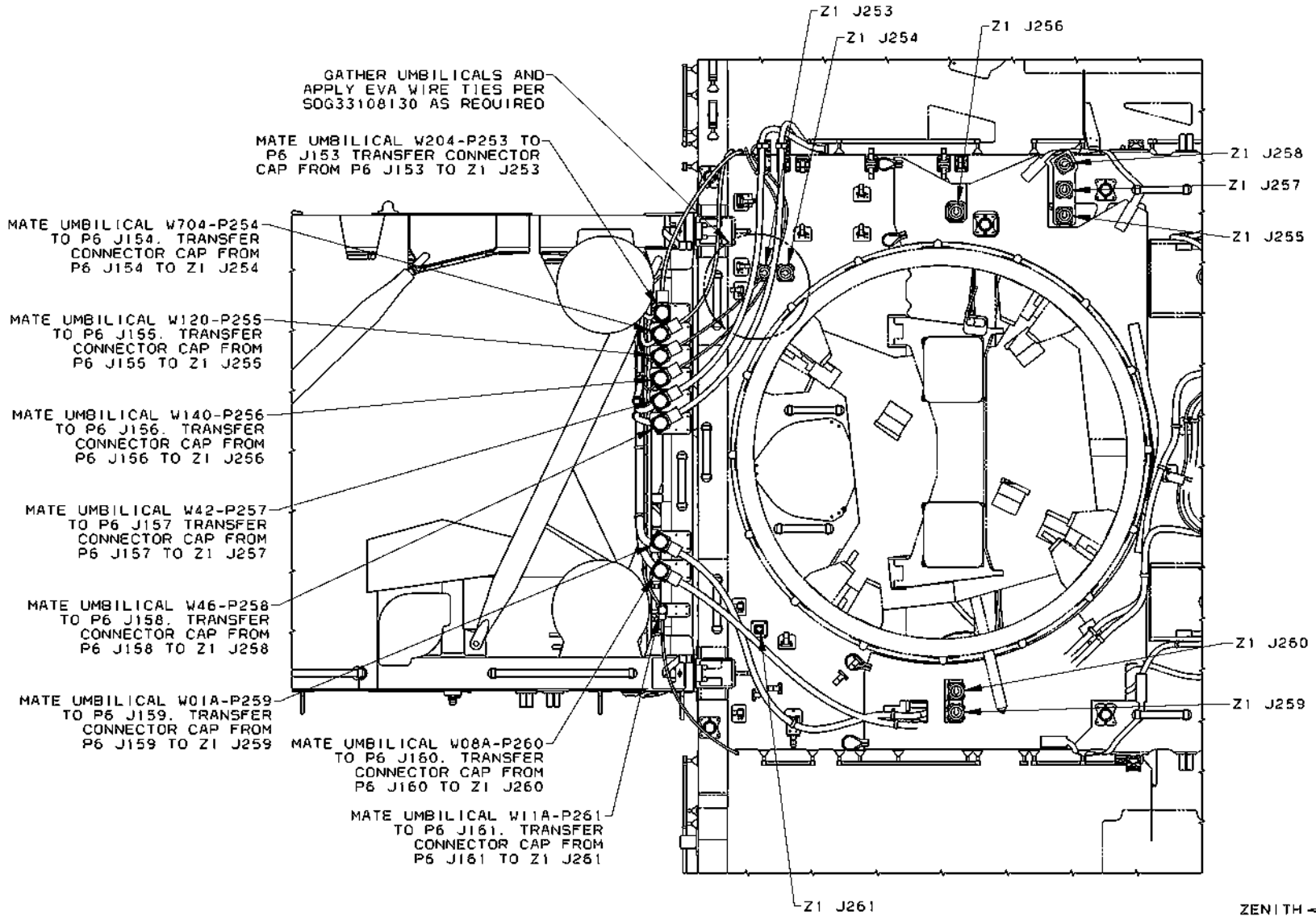
UNFASTEN H11 CINCH ASSY (FIRST OPERATION) (SEE SHT 17)

ATTACH Z1/P6 UMBILICALS PREMATE



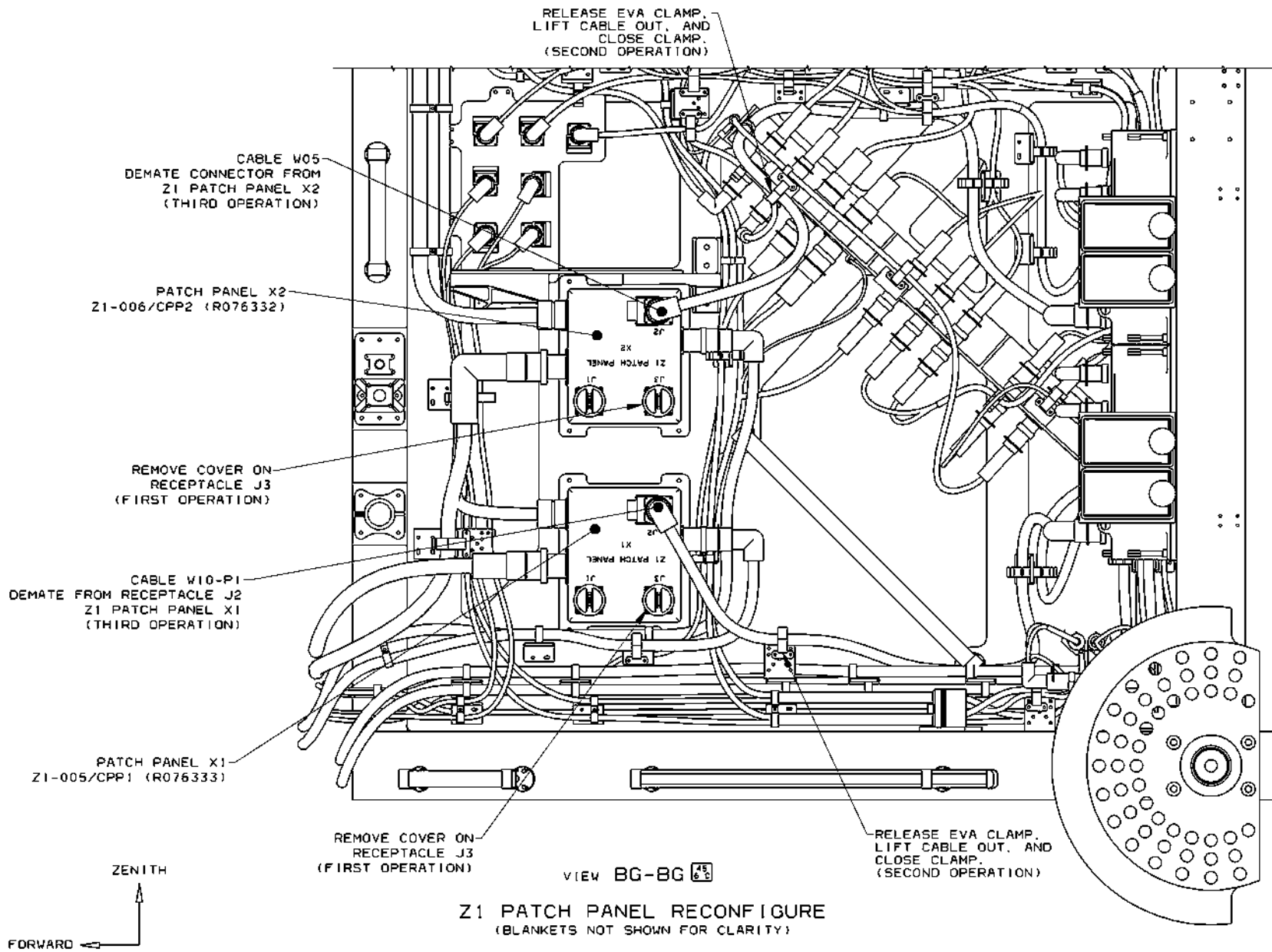
VIEW AW-AW (ROTATED 90° CW) 50
2 r

ATTACH Z1/P6 UMBILICALS MATED

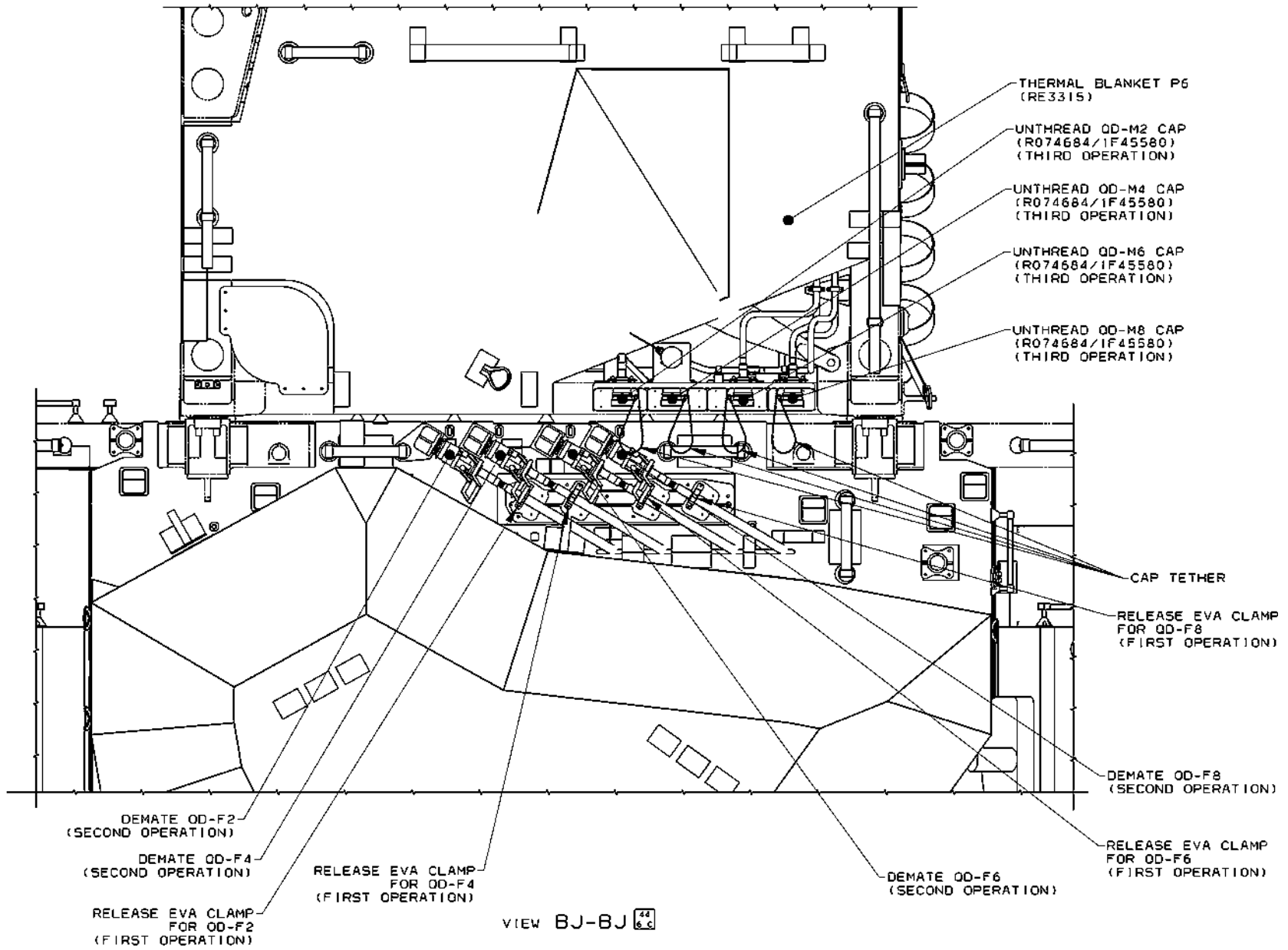


VIEW AW-AW (ROTATED 90° CW) 50
27

Z1 PATCH PANEL RECONFIGURE

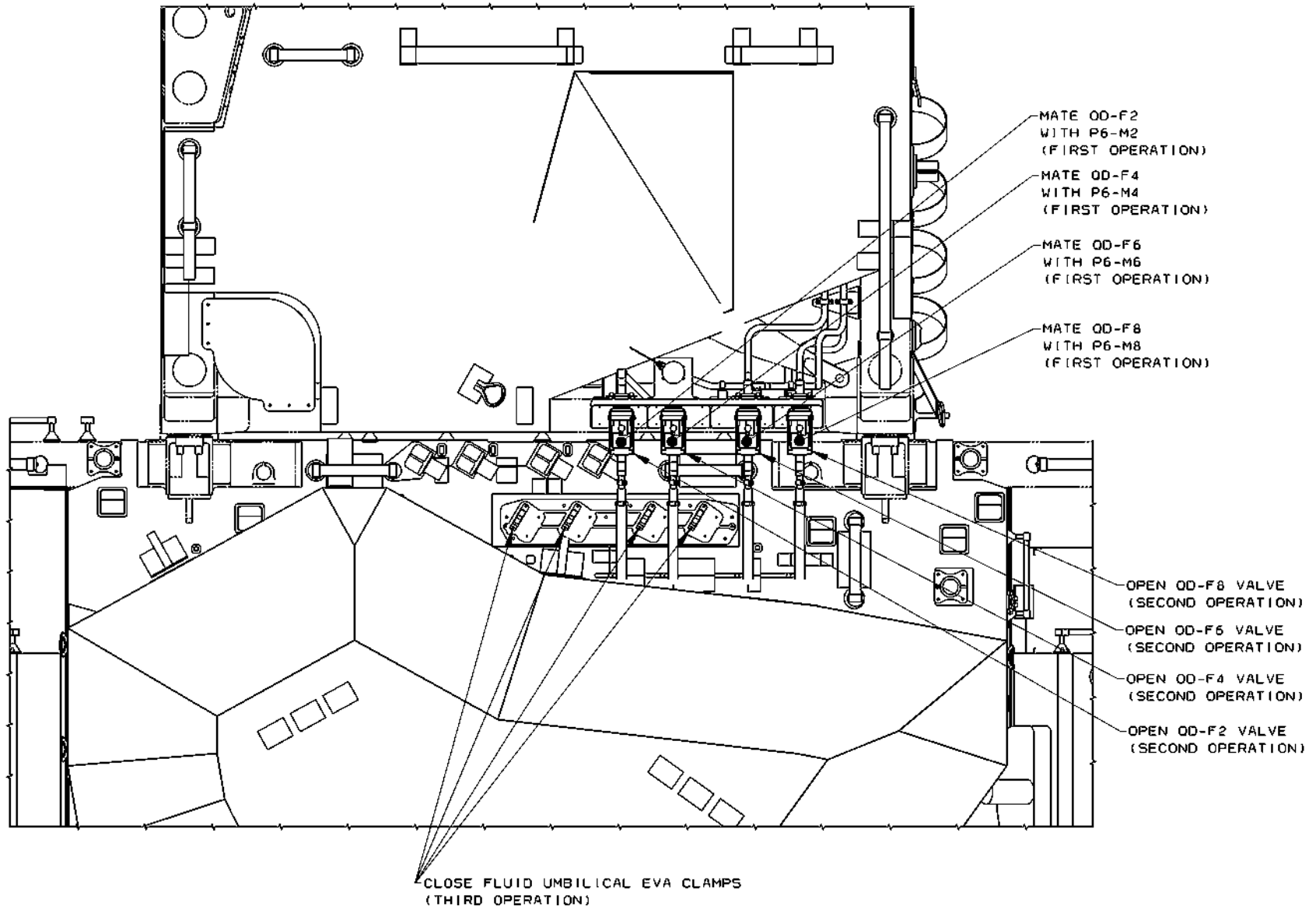


ATTACH P6/Z1 FLUID QUICK DISCONNECTS (QD)



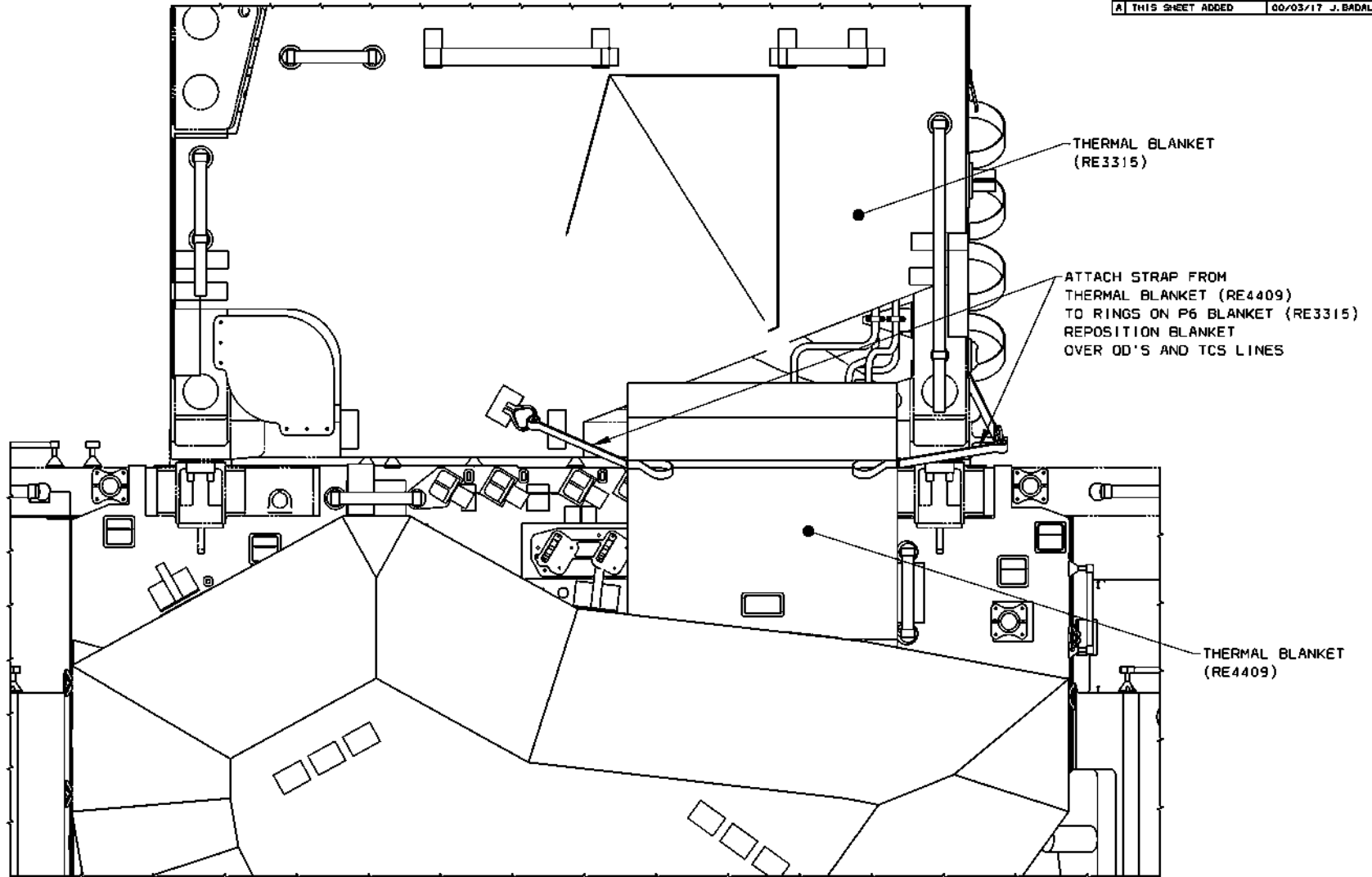
VIEW BJ-BJ 44
6.c

ATTACH P6/Z1 FLUID QUICK DISCONNECTS (QD)



ATTACH P6/Z1 FLUID QUICK DISCONNECTS (QD)

A THIS SHEET ADDED 00/03/17 J. BADAL



VIEW BJ-BJ ⁴⁴ 6c